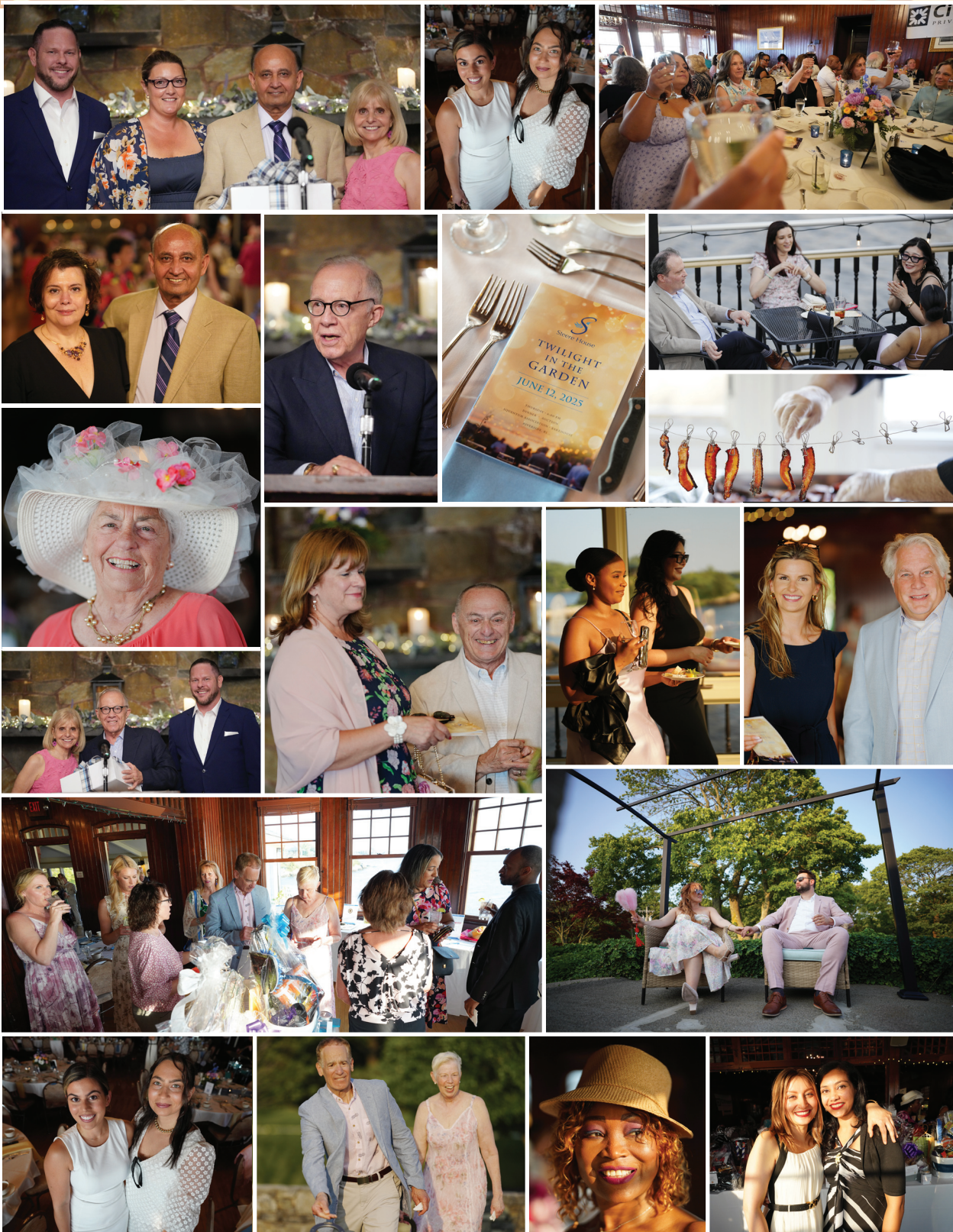


TWILIGHT IN THE GARDEN





A Letter from the Executive Director

Joshua M. Segal, NHA

Dear Friends, As we move beyond the summer months and into the holiday season, I am reminded how fortunate we are to share this community. Every day, I see small moments of kindness and caring—a nurse's aide helping a resident with her hair, a therapist offering encouragement, a housekeeper having an engaging conversation as she cleans a room. These moments add up to something larger: a culture of compassion that defines Steere House.

This culture extends beyond our walls, as evidenced by the generosity shown during our June fundraising event. Thanks to the support of so many of you, we are able to bring music, beauty, and joy to our residents, while also investing in the tools and training that strengthen our staff.

As the year winds down, I thank you for your trust and continued partnership. Together, we ensure that Steere House remains a place of care, dignity, and connection.

Warmly,



A Memorable Evening of Celebration and Support

On June 12th, Steere House hosted its annual fundraising event at the beautiful Squantum Association in Riverside, Rhode Island. The evening brought together friends, families, staff, and community partners in celebration of Steere House's mission and enduring commitment to compassionate care.

A highlight of the night was the presentation of the Steere House Legacy Award to Dr. Aman Nanda, who has served as Medical Director for more than 20 years. Dr. Nanda's leadership, expertise, and dedication have been invaluable in advancing the quality of care for our residents. We were also proud to honor Andrew Spacone, Immediate Past President of the Board of Directors, with the Excellence in Board Service Award in recognition of his steadfast leadership and oversight of a major project that strengthened the Steere House community.

Thanks to the generosity of our sponsors, guests, and supporters, the event raised \$21,000 to help sustain the vital programs and services that enrich the lives of our residents every day.



THANK YOU TO OUR 2025 EVENT SPONSORS

GOLDEN BLOOM SPONSOR



ROSE SPONSORS

CCL Hospitality Group

Safe Harbor Clinical Research

PEONY SPONSORS

Brown Medicine

Citrin Cooperman

HopeHealth

Starkweather & Shepley

Insurance Brokerage, Inc

DAFFODIL SPONSORS

PharMerica

Triad Health Care LLC

FERN SPONSORS

Lifestar Medical Transportation

Thank You to Our

SEEDLING

SUPPORTERS

Adler Pollock and Sheehan P.C.

Frank & Harriet Champi

Envision Technology Advisors

Geriatric Medical

Mack Law

Carol McMahon

Optum

Preventative Diagnostics

The Seasons East Greenwich

Shalvey Bros. Landscape, Inc.

Carol Yarnel



Summertime means Shark week!

Fall CALENDAR

AFTERNOONS AT 2:00 PM

- October 22 Get Moving with Exercise Games
- October 23 Floral Design with Sally Gruber
- October 24 Concert with Janine Andrews
- October 25 Afternoon Word Games
- October 26 Afternoon at the Movies
- October 27 Beans in a Basket
- October 28 30 Minute Trivia
- October 29 Get Moving with Exercise
- October 30 Holiday Boo Bingo
- October 31 Afternoon at the Movies

AFTERNOON AT 3:00 PM

- October 28 Concert with Luke Jackson

WEEKLY FUN & GAMES

- | | |
|-------------------------------------|----------|
| Daily - T.V. Classics | 3:30 pm |
| Daily - Hello on the Go Room Visits | 10:00 am |
| Sundays - Pencil Art | 10:00 am |
| Sundays - Afternoon at the Movies | 2:00 pm |
| Saturday - Afternoon Word Games | 2:00 pm |



Steere House

BOARD OF DIRECTORS

Linda M. Cannistra, B.S., MBA, CCRC

President

Paul S. Astphan, RN, MBA, Col USAR (Ret.)

Vice President

Norma J. Owens, Pharm.D., BCPS, FCCP

Treasurer

Diane Steere Nobles, Ph.D.

Secretary

Jonathan Cabot, J.D.

Carol C. McMahon, M.Ed.

Mark Schwager, MD

Timothy J. Reiner

Debra Page-Trim

Carol Yarnel, M.Ed.

Andrew C. Spacone, Esq.

Immediate Past President

LEADERSHIP TEAM

Joshua M. Segal, NHA

Executive Director

Nicole Plante, RN, BSN, DNS-CT, CRRN

Director of Nursing Services

Aman Nanda, MD, CMD

Medical Director

Nadia Mujahid, MD, TCU

Medical Director

Angela Rena Chatman, MS

Director of Finance

Tara Sullivan, RN

Resident Assessment Director

Christina Menyo BA, LSW

Director of Social Services

Uluma Sharpe, MS SHRM-SCP

Director of Human Resources

Gina Williamson, CDP

Director of Life Enrichment

Marcia Murphy

Dietary Services Director

Charlie Perron

EVS Director

Jessica Amaral

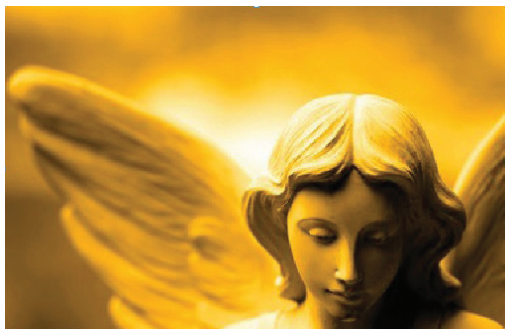
Admissions Director



CareLink
One partner for community
and post-acute solutions.

LeadingAge RI

Ways to Give Series



Remembrance and Tribute Gifts

These gifts thoughtfully express your love and respect for someone special or are a wonderful way to say thank you for the care a loved one has received at Steere House.

Remembrance gifts offer bereaved families the opportunity to invite others to make a contribution. You may also want to pay tribute to someone special by making a contribution in their honor. These gifts are a popular way to recognize staff members for the special care they've given to your loved one.

Whichever way you decide to make your gift, it will certainly touch those remembered.

Make a Remembrance or Tribute gift today at steerehouse.org/giving.



Steere House
NURSING • REHABILITATION

Admissions

If you or someone you know is interested in placement at Steere House Nursing & Rehabilitation Center, please call for information (401) 454-7970.

Go Steere House Green!

Steere House is taking steps to reduce, reuse and recycle wherever we can. You can help by sending us your email address so that, whenever possible, we can communicate with you online. Just send your address to mail@steerehouse.org. We will not share your address, and you can request to be taken off our list anytime by sending an email to maubin@steerehouse.org.



100 Borden Street | Providence, RI 02903

Steere House



Resident's Corner



Celebrating Cowboy week with a BBQ



Steere House

~ FALL 2024 ~

In this Issue

Gala Highlights

A Letter from
the Executive Director

Calendar of Events

Article

www.steerehouse.org